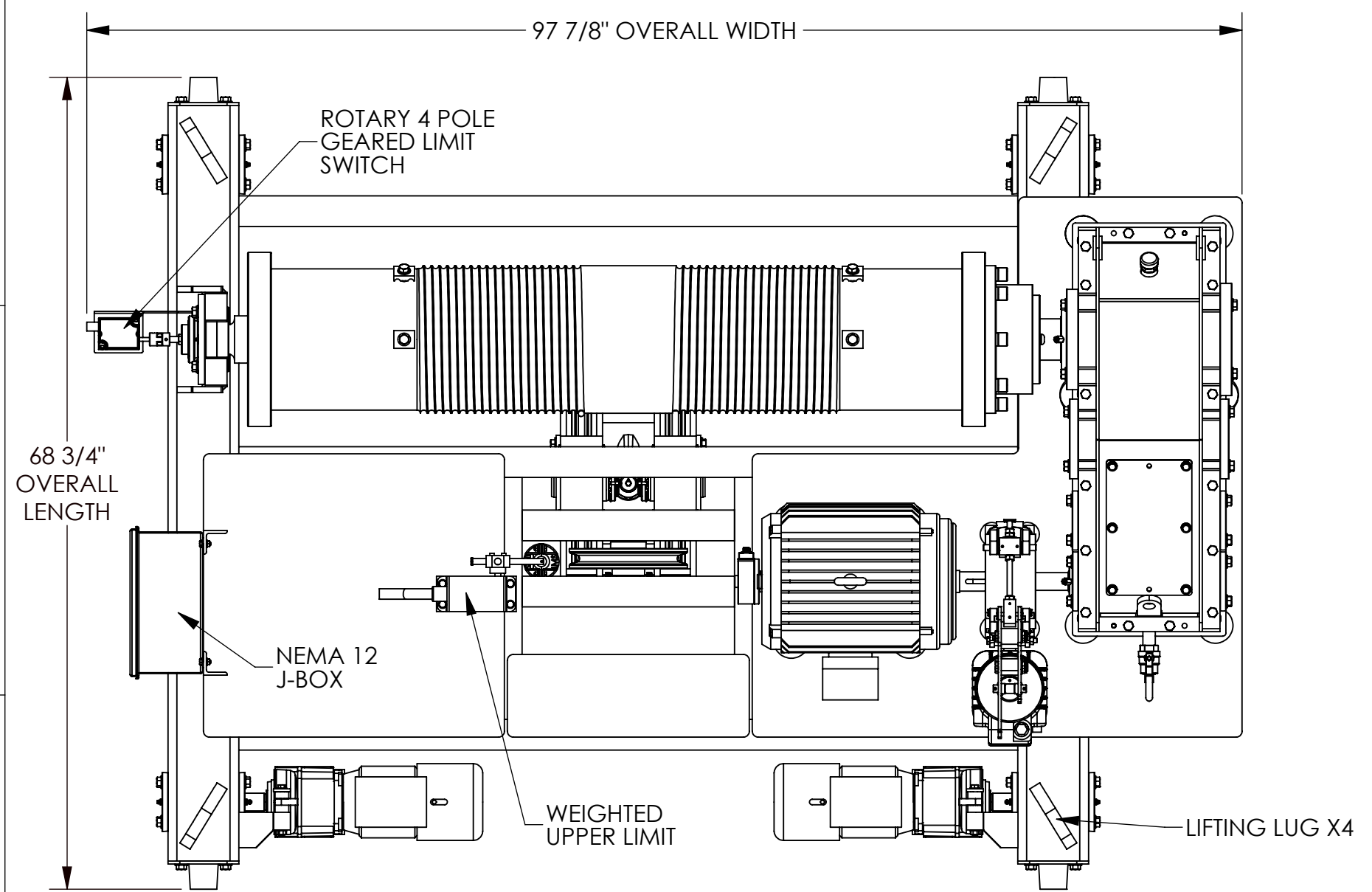
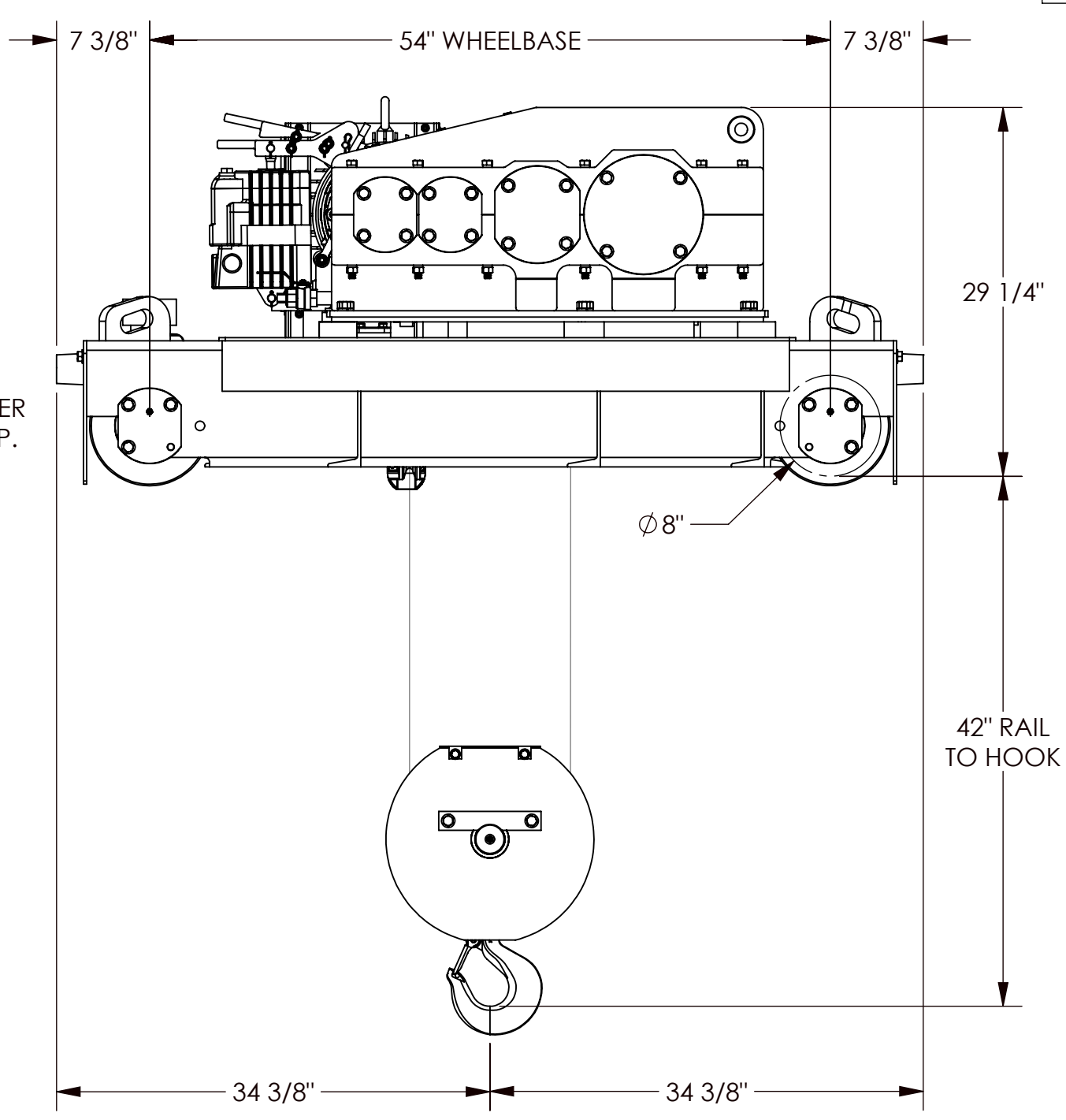
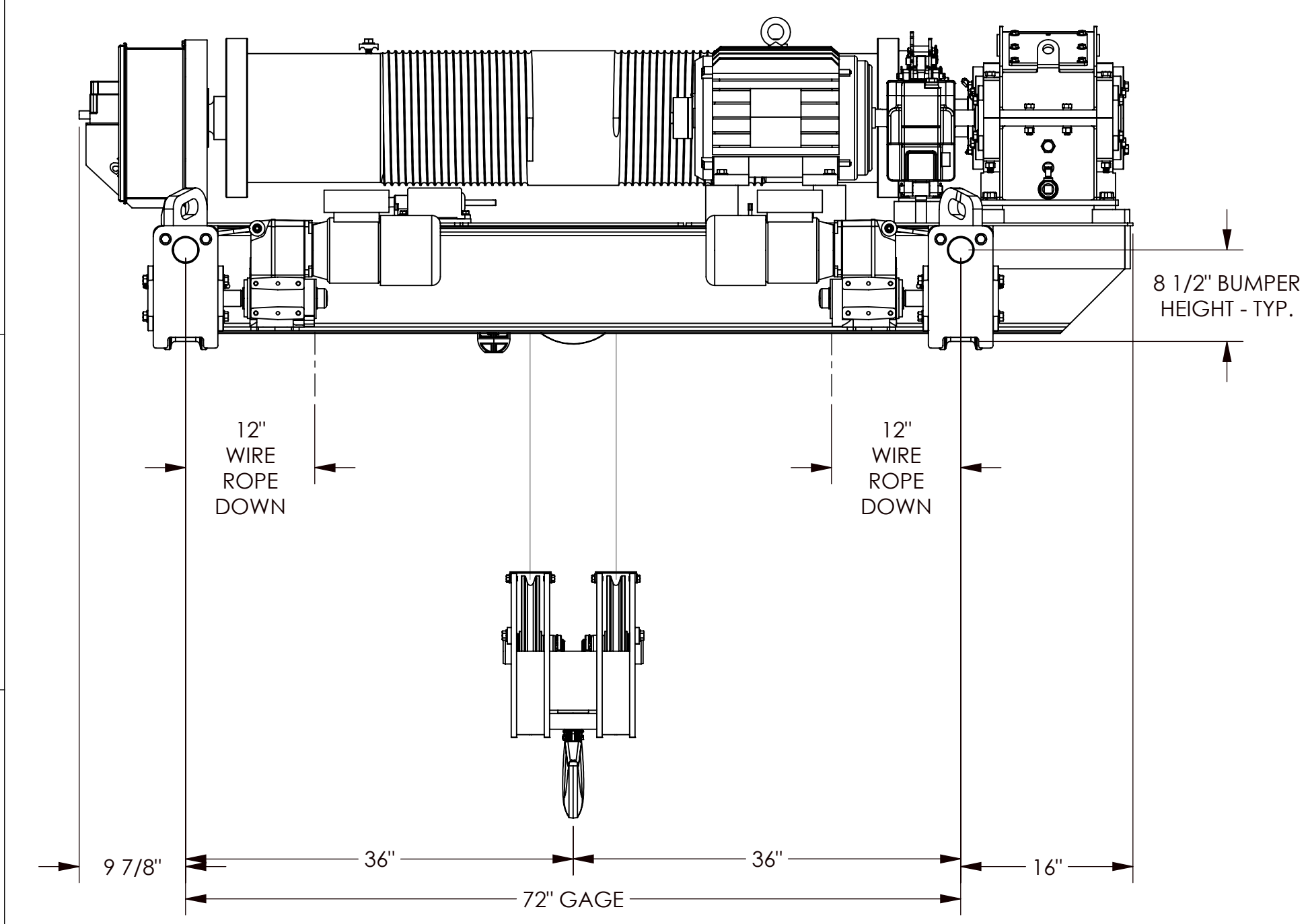


JOB #	QTY
-------	-----



- NOTES:
- 20,000 HOUR BEARING LIFE.
  - MEETS CLASS "E" MECHANICALLY.
  - INDUSTRIAL DUTY THRUSTER HOIST BRAKE.
  - STEEL FABRICATED, HORIZONTAL SPLIT HOIST REDUCER, WITH ENCAPSULATED BEARINGS.
  - FULLY DECKED WITH LIFTING LUGS.
  - HOIST MOTORS ARE NEMA RATED 60 MINUTE DUTY WITH CLASS 'H' INSULATION AND THERMOSTATS.
  - 5:1 SAFETY FACTOR ON 6X37 XXIP WIRE ROPE.
  - WIRE ROPE TO BE SHIPPED LOOSE, MAY NEED TO BE TRIMMED.
  - 24:1 ROPE RATIO MIN ON DRUM AND RUNNING SHEAVES.
  - 1/2 DEPTH GROOVING ON DRUM.
  - DOUBLE TAPERED CONE AND CUP BEARINGS.
  - ROTARY 4 POLE GEARED LIMIT SWITCH.
  - CONTROL TYPE UPPER LIMIT SWITCH.
  - WHEELS AND SHEAVES HEAT TREATED TO 400 BHN.
  - RUBBER BUMPERS.
  - IMS STANDARD PRIMER AND PAINT, SAFETY YELLOW.
  - WIRE AND CONDUIT TO NEMA 12 JUNCTION BOX.
  - TOW BAR BY OTHERS.
  - CONTROLS BY OTHERS.
  - APPROXIMATE HOIST WEIGHT IS 4,200 LBS.

HOIST SPECIFICATIONS	
CAPACITY, TONS	10
CMAA SERVICE CLASS	D
LIFT, FT	30
NUMBER OF SPEEDS	V/F
HOIST SPEED, FPM	30
MOTOR POWER, HP	20
MOTOR SPEED, RPM	1800
MOTOR CONSTRUCTION	FLUX VECTOR
HOLDING BRAKE TYPE	SHOE
HOLDING BRAKE SIZE	6 INCH
HOLDING BRAKE TORQUE, FT-LBF	100
HOIST REDUCER TYPE	HELICAL
DRUM DIAMETER, IN	12 1/2
WIRE ROPE / REEVING	1/2" - 2PD
RUNNING SHEAVES	14 INCH
CONTROL BRAKE TYPE	DYN LOWERING
PRIMARY LIMIT SWITCH	GEARED ROTARY
SECONDARY LIMIT SWITCH	WEIGHTED
POWER	460/3/60
CONTROLS	BY OTHERS
INDOOR / OUTDOOR	INDOOR
AMBIENT TEMPERATURE, °F	110
TROLLEY SPECIFICATIONS	
WHEEL DIAMETER, IN	8.00
MAX WHEEL LOAD, LBS	6,500
RAIL SIZE	ASCE 25-40#
NUMBER OF SPEEDS	V/F
TRAVEL SPEED, FPM	80
MOTOR POWER, HP	QTY 2 @ 1.0
MOTOR SPEED, RPM	1800
MOTOR CONSTRUCTION	SQ. CAGE
HOLDING BRAKE TYPE	AC DISC
HOLDING BRAKE TORQUE, FT-LBF	QTY 2 @ 2.2
TROLLEY REDUCER TYPE	HELICAL
APPROVAL TABLE	
APPROVED BY	
SIGNATURE	
DATE APPROVED	



REV.	DESCRIPTION	DATE
C	ADDED CONTROLS NOTE AND UPDATED EQ. TO STANDARD - JEE	12/1/2017
B	LOADBLOCK REVISED TO STANDARD - ATM	10/4/2017
A	RELEASED FOR PRODUCTION	4/12/2016

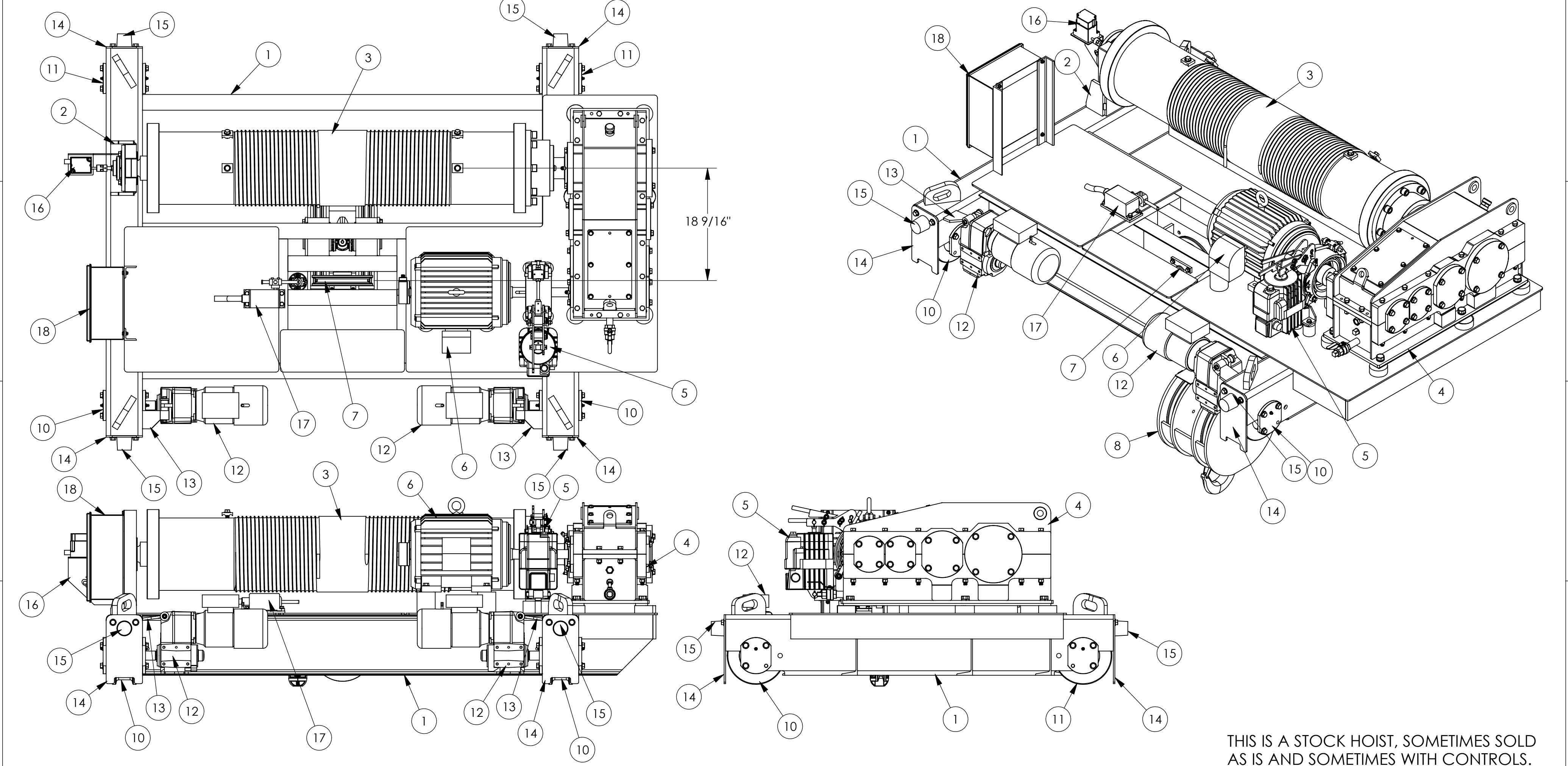
UNLESS OTHERWISE NOTED, ALL DIMENSIONS ARE INCHES	CONFIDENTIALITY STATEMENT
STANDARD TOLERANCES	This document and the information contained herein are the property of Integrated Machinery Solutions, LLC. Duplication or any information from this drawing may not be provided or revealed to another party without prior written authorization from Integrated Machinery Solutions, LLC.
FRACTIONAL: ±1/16"	
ANGULAR: MACH ±0.5°	
BEND: ±1.0°	
TWO PLACE DECIMAL (X.XX): ±0.015	
THREE PLACE DECIMAL (X.XXX): ±0.005	



DRAWING TITLE:  
**HOIST ASSY, TR, 10T, MAIN, 30 FPM, 72 GAGE, 54 WB, 2 PD**

INTEGRATED MACHINERY SOLUTIONS, LLC  
 1121 CANTRELL SANSON ROAD  
 FORT WORTH, TX 76131  
 TEL: 877-693-7467  
 FAX: 888-316-0763  
 www.team-ims.com

DRAWN	INITIALS	DATE	DRAWING NUMBER:	SIZE
APPROVED	JPB	4/12/2016	<b>515-003-050</b>	C
WEIGHT: 4200.0 LBS			SCALE 1:12	SHEET 1 OF 2



THIS IS A STOCK HOIST, SOMETIMES SOLD AS IS AND SOMETIMES WITH CONTROLS. IN THE EVENT THAT IMS MOUNTS THE CONTROLS TO THE HOIST, THE JUNCTION BOX SHALL BE REMOVED.

INDOOR PRIMER AND PAINT (ENAMEL)	X	YELLOW	BLACK	CABLE LENGTH FOR WEIGHTED LIMIT	X	STANDARD	NON-STANDARD LENGTH:
OUTDOOR PRIMER AND PAINT (EPOXY)		YELLOW	BLACK	WIRE AND CONDUIT	X	STANDARD	RIGID
CUSTOM PRIMER AND PAINT		YES (SEE NOTES)		UPPER SLOW DOWN LIMIT		YES	X NO
GEARBOX LUBRICATION	X	STANDARD	SYNTHETIC	SAFETY TIES		RAILSWEEPS	BUMPERS
CUSTOM GEARBOX LUBRICATION		YES (SEE NOTES)					

OTHER NOTES:

- WELD KEEPER BARS ON MOUNTING PADS.
- WELD PILLOWBLOCK PER PILLOWBLOCK DRAWING.
- WELD ALL MOUNTING PADS TO DECK PLATE W/ 1/4" FILLET.
- WELD TORQUE ARM BRACKET PER TORQUE ARM DRAWING.
- SEE TORQUE ARM BRACKET FOR TORQUE ARM HARDWARE.
- MOUNT UPPER LIMIT SWITCH TO SUIT IN SHOP.

ITEM NO	PART NUMBER	DESCRIPTION	QTY	LENGTH
18	532-000-019	J-BOX ASSY, CONT HINGE, CLAMPS, 14.00 X 12.00 X 6.00, 17.00 TALL	1	
17	529-000-006	LIMIT SWITCH ASSY, WEIGHTED, 1686-B, FAIRWAY, TYPE 1, 0.25-0.75 ROPE	1	
16	529-000-022	LIMIT SWITCH ASSY, GEAR, BASE/25, 4 POLE, 25:1 RATIO	1	
15	150-000-061	BUMPER ASSY, 63 X 50, M10 X 1.50, WITH NUT AND WASHER, WAMPFLER	4	
14	510-700-066	RAILSWEEP ASSY, TR, 8.00 DIA, 10.00 X 6.00 RECT TUBE, WITH HARDWARE	4	
13	510-712-101	BRKT, TORQUE ARM, TR ET, STD, NORD SK12/13 X 3.66 LG	2	
12	125-000-122	GEARMOTOR, NORD, SK1382NBAZBG80L4, 37 RPM, M1, 1.38 HS, 1.00 HP, 2.2 FT-LB BRK	2	
11	510-014-000	WHL ASSY, TR-RA, IDLER, 8.00 DIA, ASC25-40#, 22208, MOD MCB, 400 BHN	2	
10	510-014-031	WHL ASSY, TR-RA, DRIVE, 8.00 DIA, ASC25-40#, 22208, 1.38 EXT, 400 BHN	2	
9	524-000-041	WIRE ROPE, 0.50 DIA, 6X36 IWRC-XXIP, ONE SPOOL AT SPECIFIED LENGTH OF FEET	1	164
8	522-003-038	LOADBLOCK ASSY, 10T, FXD TRUNION, 0.50 WR, 2 PD, 14.00 DIA SHV	1	
7	521-006-052	SHV POCKET ASSY, CONV, 10.00 OD, EQUALIZER, 0.50 WR, 2.50 OD BUSHING	1	
6	527-000-274F	MOTOR ASSY, 20 HP, 1800, 230-460-3-60, 256T, 9.75, FLX VCTR, TENV, F1	1	
5	528-000-017	BRAKE ASSY, 6-MSTW, 100 FT-LBS, 9.75 CENTER HEIGHT	1	
4	530-000-026	GEARBOX ASSY, IMS PS70-3, L-L, 96.09, M1, STD IN-OUT, SIZE 4, 6.00 BRK	1	
3	520-008-138	DRUM ASSY, 12.50 PD, 0.50 WR, 1/2 DEPTH, 21 DBL-GRVS, 4 CPLG, 2.50 FYRP	1	
2	520-700-001	PILLOWBLOCK ASSY, 2.50 FYRP, 10.00 CENTER HEIGHT	1	
1	515-103-029	HOIST STRUCT, TR, 10T, MAIN, 8.00 DIA, 22208 BRG, 72 GAGE, 54 WB	1	

REV.	DESCRIPTION	DATE
C	ADDED CONTROLS NOTE AND UPDATED EQ. TO STANDARD - JEE	12/1/2017
B	LOADBLOCK REVISED TO STANDARD - ATM	10/4/2017
A	RELEASED FOR PRODUCTION	4/12/2016

UNLESS OTHERWISE NOTED, ALL DIMENSIONS ARE INCHES

STANDARD TOLERANCES  
 FRACTIONAL: ±1/16"  
 ANGULAR:  
 MACH ±0.5"  
 BEND ±1.0"  
 TWO PLACE DECIMAL (X.XX): ±0.015  
 THREE PLACE DECIMAL (X.XXX): ±0.005

CONFIDENTIALITY STATEMENT  
 This document and the information contained herein are the property of Integrated Machinery Solutions, LLC. Duplication of this information is prohibited. This drawing or any information from this drawing may not be provided or revealed to another party without prior written authorization from Integrated Machinery Solutions, LLC.

**INTEGRATED MACHINERY SOLUTIONS, LLC**  
 1121 CANTRELL SANBORN ROAD  
 FORT WORTH, TX 76131  
 TEL: 877-693-7467  
 FAX: 888-314-0763  
 www.team-ims.com

**HOIST ASSY, TR, 10T, MAIN, 30 FPM, 72 GAGE, 54 WB, 2 PD**

DRAWING TITLE: **HOIST ASSY, TR, 10T, MAIN, 30 FPM, 72 GAGE, 54 WB, 2 PD**

DRAWN: JPB  
 APPROVED: [Signature]

INITIALS: JPB  
 DATE: 4/12/2016

DRAWING NUMBER: **515-003-050**

WEIGHT: 4200.0 LBS  
 SCALE: 1:12  
 SHEET 2 OF 2